

WHITBY
CIVIC
SOCIETY

NEWSLETTER

MAY 2020

(Registered Charity No. 1055396)



Welcome to the latest edition of our Newsletter!

None of us expected to find ourselves locked down and unable to mingle with family and friends. As spring turns to summer, it is still not clear what the future holds, and we don't know when the Civic Society will be able to resume our normal activities. Meanwhile, we are doing our level best to stay in touch with members, and to maintain as many of our activities as we can.

We are also contributing to some new developments. Those who have seen the Gazette recently will know that our conservation sub-committee is taking the opportunity of identifying valued buildings in the town that do not (yet) enjoy the protection afforded by listed status. We are also contributing constructively to the work being undertaken for Whitby Town Deal (see Ed Asqith's report inside).

We hope that this Newsletter will give you an idea of how we are carrying on during the pandemic. Meanwhile, I'd briefly like to pay tribute to the wonderful community spirit in our small town. We are used to acknowledging the professionals who keep essential services going, from refuse collectors to doctors, and rightly so. They are literally risking their health, and even their lives, to help the rest of us.

I'd also like to raise my hat to the many local people who are looking out for friends and family on a voluntary basis. Whitby is a stronghold of voluntary activity – just think of the impressive programme of our friends in the U3A, the support that our food bank gives to the neediest, or the lovely people who staff our library – but the crisis has brought out the best in the community, with groups large and small making sure that neighbours know who to ask for help, and leaving no one to face the crisis alone.

There's a way to go yet until we come out on the other side. Until then, we can only be heartened by the generous and constructive ways in which our community has responded. And I will conclude by thanking you, our members, both for your part in that active community support, and for sticking with us in hard times. We will need the Civic Society to protect our heritage and promote civic pride both during the crisis and when it is over.

John Field, Chair

How can we improve our communications during the pandemic?

It has become ever clearer that Covid-19 will be with us for some time to come. As a result, we have had to abandon our plans for lectures and other face-to-face meetings and trips. This raises the question of how the Society should communicate with its members.

First, we have decided where possible to continue our business meetings by using the new technologies. After a few hiccups (surprisingly few!) we have held Executive meetings, and sub-committee meetings, with the help of a video platform called Zoom. It isn't perfect but it has allowed us to carry on part at least of our ordinary business. In particular, the planning sub-committee is continuing to scrutinise planning applications more or less as usual – if anything it is looking more closely at proposals because of the risk that the local planning authority will try to delegate decisions to officers.

. We are also making more use of our social media accounts to share information. Our Facebook and Twitter accounts function smoothly, and seem to touch a chord with a wider public

Our intrepid secretary has now launched an Instagram account for the Society. If you haven't seen any of these already, please take a look – and let us know if we can publicise an issue or organisation through these social media.

Then there is email. Almost all of our members now have an email account, and hopefully you enjoy hearing from us. We also use email to distribute the Newsletter. Of course, not everyone has access to the internet, and we can't use the postal service, so if you know a fellow member who would appreciate a copy, please print it up and pass it to them – cautiously, of course!

ZOOM MEETING OF THE
EXECUTIVE COMMITTEE



We are keen to learn how we could improve our communications with you. Please let us know if you have any thoughts on this – we need your ideas and suggestions! Our email address is whitby_civic_society@yahoo.co.uk

John Field

Notes from rural France

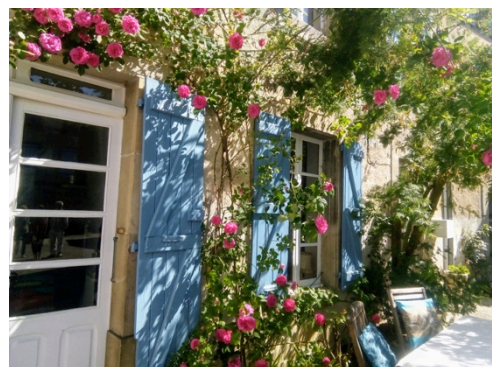
In March this year we found ourselves on the wrong side of the channel, although whether you agree it's the wrong side will perhaps depend on how much you like red wine. We have an old, rambling property in the Aude, not far from the Spanish border, that we ran as a small holiday business for many years. We were travelling this time in order to arrange essential roof repairs, oh the glamour! With all frontiers rapidly closing in front and behind us, we found ourselves three cancelled ferry bookings later, adjusting very nicely to a slower pace of life in rural France where the church clock marks the gentle passing of each day. Things certainly seem easier in our little village than in the towns, with few people and so much open space, although lockdown here appears to be stricter than the UK. The right papers are necessary to even go for a walk, though I'm uncertain to what degree the gendarmes are enforcing this, even the most dedicated officer is unlikely to be lurking in the hills and forests, at least one would hope.



There hasn't been the binge buying in the French supermarkets that was experienced in the UK, plenty of loo roll, pasta, etc. The only bare shelf has been the boxed red wine, Nick was distraught, we tend to go for quantity rather than quality here. The French also must be distraught, no more handshaking and all that kissy kissy, the introductions would often take longer than the meetings.

Speaking of meetings, with a dodgy internet connection, continuing my role as secretary has been challenging. My first experience of a virtual meeting was not pretty. The internet signal, such as it is, is unable to penetrate the meter thick walls of the old stone house and as John, our Chair, chose the only rainy day in six weeks to hold the Executive meeting, I found myself outside, umbrella in one hand, waving around my mobile phone in the other with the hope of attracting some passing satellite. I swear one of our neighbours came out to ask if I was alright muttering something about, "Crazy Eeenglish!"

Well, I think that's enough for now. Take good care everyone and hope to get back to Whitby sometime.



Cordialements
Carolyn Kurr
Secretary
Whitby Civic Society

The planned new estate at Broomfield Farm

Comments from our Planning Committee

You may already have seen news reports quoting our response to the proposed new housing development at Broomfield Farm. This is likely to be a sizeable new estate, which will significantly shape the east side of the town, so we thought you might be interested in seeing what we said about it.

At present, the developers are only seeking 'outline planning permission', leaving details such as housing design for a second, full application. Our planning sub-committee drew up our comments, which were then approved by the Executive and submitted to Scarborough Borough Council.

You can find the application on the Council's Planning website (reference number 20/00249/FL). Our planning sub-committee consists of Nick Fardon, John Field, Janet Kukk, Ian Lawson, Joyce Stangoe, and Neil Swannick.

Whitby Civic Society urges the Authority to work with the developer to ensure that the Broomfield estate become an outstanding example of best practice in urban design. This is an important development for the town, and it gives the Authority a one-off opportunity to secure a housing estate that is accessible and inclusive for all residents; provides high standard homes with access to services and shared spaces; and which is carbon-neutral, serving as an exemplary 'eco-village'.

As we understand it, a local planning authority may accept a 'hybrid' application that seeks outline planning permission for specified aspects (in this case access and full planning permission for vehicle access, spine road, community hub, drainage infrastructure and public open space) and defers consideration of full planning permission for 'reserved matters' (including in this case the adoption and use of a design control document, or design code, for the 320 proposed houses).

Full application

In respect of the application for full planning permission, Whitby Civic Society welcomes: the general commitment to sustainability, the principle of a community facilities building, commitments to energy and water usage reduction, plans for construction waste recycling, the retention and enhancement of the public right of way ensuring direct pedestrian and cycle access to the Cinder Track, and pavement improvement along Stainsacre Lane as well as the other S.106 commitments.

We are concerned about the current proposals to 'mitigate' odour from the waste treatment plant. Mitigation may itself involve less than sustainable chemically based processes. In keeping with the principle of sustainability, we would prefer to see a modernised treatment plant capable of producing biogas and usable biosolids from human sewage.

Second, we are also concerned at the apparent loss of part of the neighbourhood park; this runs entirely counter to the aim in the Local Plan of ensuring that new developments do not only provide open spaces but actively help to 'address previous deficiencies'.

Third, we would like to see further detail on the approach being taken in respect of pedestrian / cyclist / vehicle traffic management on the estate and the A171.

Fourth, we note the objections raised by Whitby Wildlife Sanctuary. Their suggestion of a broader 'buffer' seems entirely reasonable.

Finally, we fully agree with the proposal for further archaeological work. Evidence of Roman occupation as well as for the location of a Danish Thing, for example, have considerable potential to enhance Whitby's known heritage. Development of the site will provide a one-off opportunity to enrich our knowledge and understanding of the past.

Reserved matters

In respect of the reserved issues, we are broadly heartened by the developers' 'six capitals' approach, including the commitment to affordable housing (of which 70% rented, 30% co-ownership); we would like to be assured that this will involve 'pepper-potting' rather than separation.

However, we think the proportion of affordable homes, set at the minimum rate of 30%, is too low. Our preference would be for a high proportion of new homes to be earmarked for local residents, and controls on second home and holiday let uses. Failing that, we recommend a level of 40% affordable homes combined with a partnership with a reputable local social housing provider.

We also welcome the possibility of Community Land Trust involvement, and the proposals for later life housing. There are also promising indications relating to: district heating, sustainable transport, and the estimated 880 jobs (including 9 apprenticeships).

At this stage, there is relatively little detail on many of these issues. For example, we expect to see proposals in a full application for such issues as EV plug-in points, the use of air source heat pumps, an agreed density per hectare, and specific plans for public transport.

We also expect to see detailed proposals for accessibility and inclusion, covering the whole development and not solely the later life arrangements. If the estate is to be exemplary, it should go beyond the minimum standards of 'Homes for Life'; planning today should be 'future-proofed', bearing in mind the expected life of the housing and the changing age profile of the UK's population. There is a severe shortage of accommodation for families with one or more disabled members and the Authority should ensure that the detailed full application will address this

We look forward to seeing the highest standards in the developers' design code, which we hope will reflect the principles outlined in the principles adopted by, and recommendations of, the Government's Building Better, Building Beautiful Commission. We expect that the developers will engage in public consultation in Whitby over the design code.

Finally, we would like to see the Authority and Keyland setting out ambitious proposals for the Broomfield development to serve as a model "Green Village" – for it to become Whitby's, and thus the UK's, answer to the well-established Swedish development Hammarby Sjostadt.



Whitby's Heritage Assets- PROTECTED or EXPLOITED

Whitby Civic Society is looking for Members' views on the heritage and culture of our Town do you think it is being PROTECTED or EXPLOITED? We

are also looking at reviewing our **local heritage assets** which can range from buildings, designed landscapes, archaeology and elements of the natural environment not already listed and would like to know your views on the above and suggestions for local assets.

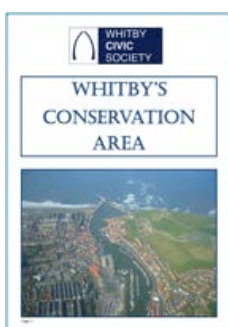
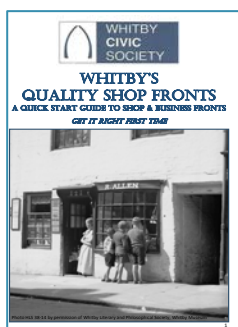


Please use WCS Facebook, Twitter or our email address whitby_civic_society@yahoo.co.uk to forward any comments or come and speak to members of the Committee once we are back to holding our regular talks.

This is a particularly important time to consider this issue as Whitby could suffer economically following the pandemic putting increased pressure on planning and the historic environment. The Centre for Towns has already highlighted the Yorkshire towns of Whitby and Ilkley as among those with the highest proportion of people employed in the worst-hit sectors of the economy. The two towns have more people working in pubs or restaurants than anywhere else in the country, with 23 per cent in Whitby working in the shut-down sector.

Whitby is also in the process of applying for up to £25 million from the Government's Town Fund which could have a massive impact in regenerating the town and helping to save our heritage and culture, go to <https://mytown.communities.gov.uk/town/whitby/> to add suggestions for projects or comment on projects already proposed to ensure the leaders of this bid know what local residents want for the future of Whitby.

WCS Conservation Group has tried to highlight the need to conserve our Heritage and Culture for both residents/businesses and our visitors via our publications 'Whitby's Quality Shop Fronts' and 'Whitby's Conservation Areas'.



Our latest projects include preparing a guide to 'Conserving Your Home' which covers maintenance issues for listed residences or those in Conservation areas, plus a review of all shops/businesses in the area, updating SBC's 2013 record in the **Whitby Conservation Area - Character Appraisal & Management Plan**.

This is another area of concern for Whitby, the loss of diversity in the town centre with most new planning applications being for bars and cafes/restaurants many with takeaways. The latest of these being an application to reclassify the youth community facility 'Youth Shack' above the toilets on New Quay Road, into a bar.

This building has an interesting history of serving the community as the upper floor was the public library from 1944 1966.



We, via our Planning Group, try to comment on all planning applications in the Conservation areas or those involving listed buildings and major building/housing developments. This approach however fails to address the loss or changes to some of our less well known but still important buildings in Whitby showing our heritage throughout the twentieth century. This is most notable on the West Cliff where we are continually losing interesting family homes, which are generally being either partially or totally demolished to make way for gleaming glass fronted holiday homes generally of a similar design. I am particularly sad to see one of a matching pair of 1920's homes in a prominent location on the coastal footpath at the end of Caedmon Avenue being subject to a planning application for demolition and rebuilding of a much larger property.



This to my mind is a travesty, particularly as the applicants submitted an alternative for an extension, which if done sensitively could have preserved the original matching building.

Historic England also indicates 'early research shows that sympathetically upgrading and reusing existing buildings, rather than demolishing and building new, could dramatically improve a buildings' energy efficiency and would make substantial energy savings because the CO2 emissions already embodied within existing buildings would not be lost through demolition. This would beg the question are our planners taking the 'Climate Emergency' declared by our Council seriously and does the Government need to have a rethink on VAT for heritage buildings?

Whitby already has a list of Local Heritage Buildings in the **Whitby Conservation Area - Character Appraisal & Management Plan - Technical Appendix Section 2, List of Local Interest Buildings**. However these were generally taken from the old lists of 'Grade III' buildings or existing lists of significant conservation area or landmark buildings and are limited to the Conservation Area. What we want to do is raise the profile of local heritage by identifying heritage assets that are of greatest importance to our members and other local people, resulting in an updated list ratified by the Borough Council. This could contribute to the development of the evidence base used to support local plan making under the National Planning Policy Framework. One of the buildings suggested for listing by a number of the Conservation Group volunteers is The Metropole. This building acts as a landmark when approaching Whitby on the Pickering Road and has an interesting history including being a hotel.

In WW11 it became the base for the 52nd AATraining Regiment, RA. During an air raid on the night of 6th September 1942, 19 year old Gunner Robert Watmore from Newbridge, Nr Edinburgh was serving with his regiment on guard duty in the car park which received a direct hit by a bomb dropped from a German aircraft. He became the only British soldier to be killed in Whitby by enemy action in the Second World War – a war memorial to this soldier can be seen in the garden of the adjoining building - Welton Court, North Promenade



Local Heritage lists play an essential role in building and reinforcing a sense of local character and distinctiveness in the historic environment. This is one of Whitby's major strengths which keeps people flocking to Whitby and one we need to maintain and enhance. We look forward to your comments and suggestions.

Joyce Stangoe

Susan Harty 1939 - 2020

We were saddened to hear that Susan Harty had passed away on the 15th March.

Susan had been a valuable member of WCS for many years, along with her late husband Nick, both of whom had served on the Executive Committee. In the past, Susan had organised charity events and also kindly hosted our Executive Committee meetings at her home over a period of several years. In recognition of her sterling service to our Society, Susan was made a life member in 2019, only the second person, at the time, to have this honour bestowed upon them. We offer our condolences to Susan's family.



Whitby Town Deal – what next for our town?



As editor of the *Whitby Gazette* in the mid-1990s, the Civic Society gave me the honour of unveiling its plaque to Bram Stoker on West Cliff; this led to our joint appearance pictorially in the Dracula section of Whitby Museum at the time, which was quite amusing.

May I start at the beginning and re-cap on the context **Whitby Town Deal**. It is part of a government-funded opportunity to bid for funds to improve skills, digital and transport connectivity, create new jobs and aspiration and revitalise the economic prospects of the area.

A total of 101 towns in England from Blackpool to Bedford, Torquay to Truro, were asked to join the Towns Deal Fund programme. Whitby is included and has been invited to develop a Town Investment Plan to bid for up to £25m. This is a competitive bidding process and your support would be helpful.

So far, from meetings and comments, Whitby people have raised six themes:...

- Connectivity (digital and transport)
- Skills and enterprise
- Heritage, culture, leisure and Special Places
- Community well-being
- Live here, work and learn anywhere
- Resilience and sustainability

Many people have provided their suggestions, and the youth of Whitby are being engaged for their views of what they would like to see in the coming years, looking ahead to the 2030s.

The 740 Whitby Air Cadet Squadron, Whitby Sixth Form students and the young members of Whitby Boxing Club on the Eastside have all been invited to contribute ideas.

The ideas submitted so far include:

- Trial tidal energy, harnessing the town's natural resources and maritime traditions
- An extension to Pannett Art Gallery for the photographs of Frank Meadow Sutcliffe
- Whitby is surrounded by farming, forestry and fishing - create a community food system
- Replicate the stone paving on the west side as used on Church Street
- Create a maritime quarter to conserve heritage and promote tourism
- Whitby as the first UK Green/Car-Free Town Centre - Conservation area closed to traffic
- Extend the seawall from Upgang to Sandsend
- Recreate Hilda's monastery in Whitby on the cliff top
- There is one well used skate park but there needs to be more options for younger ages
- A Playground for Pensioners
- Develop a Heritage Centre on Calla Beck land to celebrate fishing heritage
- Provide pop-up event power in public areas for event-friendly spaces

Frank Meadow Sutcliffe Hon. F.R.P.S. (1853 – 1941)

Dear Civic
Society Members, hope everyone is keeping fit
and healthy.

As my presentation on the 18th May was
postponed until further notice, I thought you may
appreciate an update on what is happening with
the Frank Meadow Sutcliffe collection and The
Sutcliffe Gallery.

After more than 60 years displaying the beautiful
photographs taken by Frank Meadow Sutcliffe,
our gallery at 1, Flowergate, Whitby closed at the
end of December 2019.

We are now showcasing the Sutcliffe collection
online. A website is an ideal platform for a
photographic collection and people can view
over 500 of Frank Sutcliffe's images. The
photographs are divided into categories such as
fisher people, harbour scenes etc.

There are pros and cons to only having a
website and no high street presence, but the
advantages are 24/7 opening hours and a much
more extensive selection of photographs to look
at compared to the range we offered at 1,
Flowergate.

Please take a look at our smart new website at:-
www.sutcliffe-gallery.co.uk
(Or google:- sutcliffe gallery).

There are many Sutcliffe photographs on the
website you will not have seen before.

I look forward to seeing you in the future with a
talk and slideshow of Whitby street scenes taken
in the late 1800s by Frank Meadow Sutcliffe
Hon. F.R.P.S.

All the very best,

Mike Shaw
The Sutcliffe Gallery



COMMUNITY SPIRIT

If there is one good thing to come out of this Covid 19 pandemic it is that it has brought to the surface a good community spirit. We have all seen some amazing fund raising efforts and witnessed acts of kindness, offering support to each other, all the front line workers and our deserving NHS.

Wanting to do my bit to help, I recently joined an inspiring Facebook group called Sewing Scrubs for James Cook JCUH.

This group was started six weeks ago by two enterprising young ladies, Charlotte Young and Charlotte Roche. After seeing there was a national need for scrubs, they contacted James Cook Hospital to offer help and started the sewing group the same day with 20+ members.

After other health professionals saw their Facebook personal profiles the whole thing just snowballed and today the group has approximately 1,200 volunteers.

There have been requests for scrubs mostly from the Teesside area but also further afield and the group has supplied to hospitals, hospices, community nurses, GP practices, care homes and more. The scrubs are all made by volunteers and given free of charge.

Charlotte Young said "We've raised £2,566 through crowdfunding*", which doesn't include all the little separate fundraising everyone has been doing. We have had donations of hundreds of sheets and duvet covers from the public and businesses such as Tesco, Asda, Wilkos and The Range"

The donated fabrics, sheets and duvet covers have been magically transformed into scrubs, headbands, scrub caps, face masks and laundry bags.

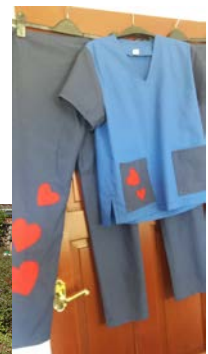


This group has produced over 1,500 sets of scrubs and 500 to 600 more are in the pipeline at the moment. This is increasing on a daily basis.

There is an army of helpers of all abilities, occasionally frustrated with their sewing machines (which sometimes decide not to work properly), some having to cut out garments on their carpeted floors, some juggling with work and families but still making time to sew, all with the common aim to help support the NHS.

Charlotte said, " We have found that not only is our group helping health care professionals, it's brought so many people together (not physically) but lots of our ladies have found new friends or even found old friends. I am so grateful to every single member from those who are sewing, those who are giving encouragement and those who are helping with deliveries etc. I'm totally overwhelmed by how amazing our community spirit is and long may it continue"

I think we can all echo those sentiments.



* <https://www.crowdfunder.co.uk/sewingscrubsteesside>

PAM WHITLAM

Fun Page

Test your knowledge



Whilst taking your daily exercise



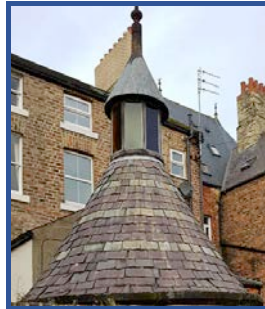
why not see if you can find the following



1. Attached to which Café ?



2. Attached to which building?

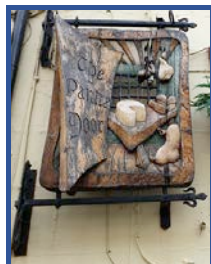


3. Seen on which street?

?????



4. Attached to which building?



5. Seen on which Street?

?????



6. Seen on the side of which shop?



7. Seen in which garden?



8. Seen on which building?

Answers on our web site: whitbycivicsociety.org.uk



Cryptic Quiz

UK Towns and Cities.

- 1) For when you need a wash
- 2) Put something in the ground
- 3) Make the answer to question 2 illegal
- 4) You walk your dog with them
- 5) Local sporting rivalry
- 6) Add fuel to a fire
- 7) Old car
- 8) Not writing or arithmetic
- 9) Tying a bow around pork
- 10) Updated boat for Noah
- 11) Our mother from Northern Ireland
- 12) Someone who's leaving
- 13) Toilet weighs 907Kg
- 14) Ring quick
- 15) Pectoral fur
- 16) Ships employees
- 17) Hole in a boat
- 18) Holy sister devoured
- 19) Make sure the pudding isn't raw
- 20) How male sheep move between fields

ANSWERS ON PAGE 12

DID YOU KNOW?

1945 - Seventy five years ago

The Dredger Esk returned damaged from war service at Scappa Flow. It took the whole year to carry out repairs so that a start could be made on restoring the harbour to its 1939 state.

February - The upper harbour was frozen over.

June - Publication of a report prepared for the UDC proposing future development of harbour and port facilities, in relation to other activities in the town.

November - Demolition of air raid shelters began.

The Jet industry During Lockdown.

Whitby businesses have always enjoyed a busy stream of visitors who love nothing more than meandering up and down the picturesque streets, browsing the shops and spending their hard-earned money on an eclectic mix of products that can only be found in the many unique and independently owned businesses that make up the popular shopping areas of our town.

However, even in the busiest of tourist destinations, businesses cannot escape the crippling effect that Covid-19 is having on otherwise successful trades and livelihoods. Take the Whitby Jet industry for example, a trade which has seen its fair share of ups and downs over the years, but which has always survived due to its enduring popularity. Nobody knows what impact current events will have on the future of this trade, but is there a way of mitigating the problem by adapting and modifying while complying with government guidelines?

Shops are now quickly turning to the online sector to capture sales. There are certainly lots of potential customers out there, who seek to find solace in these difficult times either by browsing or making online purchases, so providing an

alternative platform for shopping as well as being able to converse with customers either by phone, live-chat, WhatsApp and other mediums is vital for online success. This new way of working is also easy to migrate from shop to home in a safe and contained environment.

As a result of these changes, some businesses are seeing an unprecedented jump in sales, with W. Hamond The Original Whitby Jet Shop doubling its takings on last year despite the closure of its shops and the furlough of more than three-quarters of its staff. But be under no illusion, a successful online business takes time and hard work to gain momentum and a good customer base. It is not an overnight fix, however, it could just be the push needed to keep retail businesses going until this crisis alleviates, and if one were thinking about transitioning to online or improving an existing website, then this is certainly the time to do so.

Rebecca Tucker
C.W.SELLORS

W Hamond - The Original Whitby Jet Shop

Oyez Whitby Civic Society!



I am currently working on a second edition of my book, 'The Word on the Street', which is the first-ever book exploring the roles of historic town criers and bellmen. In the second-edition I would like to include former Whitby bellman, John Stevenson (died 1907). However, I am having difficulty finding good, reliable sources. I would normally expect to find material in the archives of the relevant local newspapers, but all the references to him in these sources have been brief and insubstantial. I wonder if you or any of your members might please be able to point me in a useful direction?

Many thanks
David Mitchell

Research Associate University of Chester

If anyone has any information they would like to share about John Stevenson please contact any member of the executive committee.

Names and contact numbers can be found on page 13

Answers to Cryptic Quiz - UK Towns and Cities, page 10

1...Bath 2 ...Bury 3...Banbury 4...Leeds 5...Derby 6...Stoke 7... Bangor 8...Reading
9 ...Nottingham 10...Newark 11...Armagh 12...Exeter 13...Luton 14...Belfast 15...Manchester
16...Crewe 17...Leek 18...Nuneaton 19...Bakewell 20...Ramsgate

WHITBY CIVIC SOCIETY - 2020 EXECUTIVE COMMITTEE

PRESIDENT	Barry Atkinson	01947 811707	atkinson326@btinternet.com
CHAIRMAN	John Field	01947 600117	john234field@btinternet.com
VICE CHAIRMAN	Neil Swannick	01947 601609	n.swannick@btinternet.com
SECRETARY	Carolyn Kurr	07908 691201	whitby_civic_society@yahoo.co.uk
TREASURER	Janet Kuk	01947 600677	jkukk@btconnect .com
MEMBERSHIP SECRETARY	Chris Whitlam	01947 811808	cjwatchg16@gmail.com

COMMITTEE MEMBERS

Sue Boyce **Peter Craggs** **Mike Dawson** **Joyce Stangoe**
Nick Fardon **Rebecca Tucker** **Fiona Clelow**

NEWSLETTER **Pam & Chris Whitlam** **01947 811808** **preven16@msn.com**

Membership Application

Should you wish to join Whitby Civic Society please complete this Application Form and send it with a cheque made payable to **Whitby Civic Society** to:

Mr. Chris Whitlam, 16 Carr Hall Gardens, The Carrs, Ruswarp, YO21 1RW.

e-mail..... **cjwatchg16@gmail.com**

Alternatively, bring this completed form along to one of the Society's monthly meetings.

If you are a taxpayer the Society will be able to claim back the tax that you have paid on your subscription at no cost to yourself. To allow us to do this, please sign the declaration below. Thank you

- - - - -

I would like to join **Whitby Civic Society**, Registered Charity No.1055396
Membership cost is **£10** per calendar year.

Full name

Address

Post Code

Telephone

E-mail

I enclose £10 being this year's subscription.

I enclose £ an optional donation towards the work of the Society.

Total

Signature

Date

I am a UK tax payer

Please tick box if appropriate

I would like Whitby Civic Society to claim back tax on my subscription and donation from the Inland Revenue from the date on this form until further notice.